



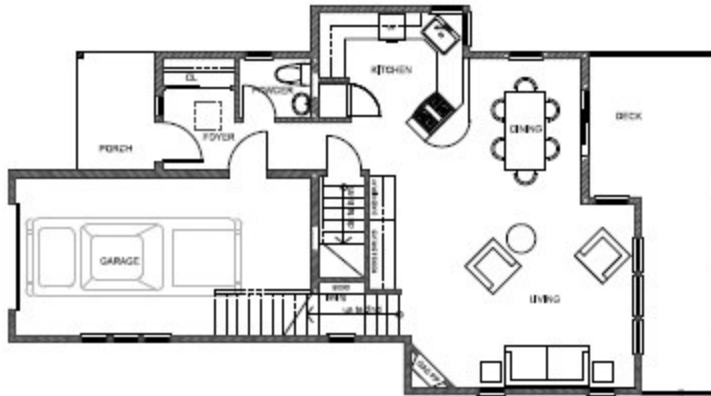
by Habitat
Construction



"An Archipelago of 17 Homes"

Catala

Main Floor

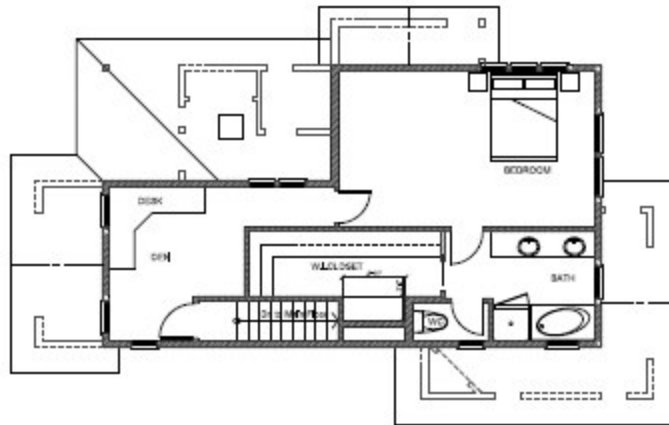


Specifications:

Main Floor = 694 sq. ft.
Upper Floor = 407 sq. ft.
Bonus Room = 196 sq. ft.
Basement- Heated & Finished
Area = 351 sq. ft.

Total Heated & Finished
Area = 1648 sq. ft.

Upper Floor



Basement - Unheated &
Unfinished Area = 124 sq. ft.

Porches & Decks:
View Side = 200 sq. ft.
Front Patio = 54 sq. ft.

Basement

